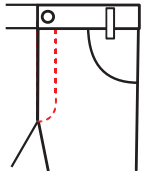


PF-2200

Sewing Unit for Folding and Attaching of Pockets Facings



The pocket facing machine is used for automatic folding and attaching of pocket facings onto the pocket bags with consistent quality and high productivity.



AMF[®] REECE
Better Ideas, Better Made

Standard Features

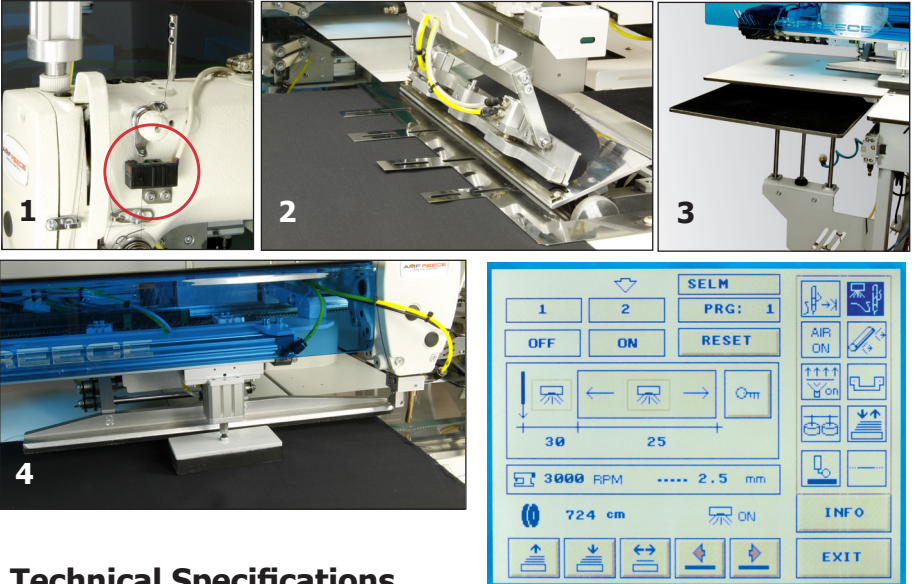
- The Stitching Length can be Adjusted from the Panel or Controlled Automatically by a Photocell **1**
- Folding Station for Facings up to 300 mm Long **2**
- Consistent Sewing Performance on Different Types of Fabrics
- The User-friendly Touch Screen Control Panel Makes it Easy to Change all Stitching Parameters Including the Stitch Length
- AC Servo Motor Combined with PLC Control System Ensures Reliable Operation of the Machine under Difficult Operating Conditions
- Backtacking
- Diagnostic System

Standard Accessories

- Vacuum System for Connecting to Internal Source
- Stacker **3**
- Top Thread Monitor
- Laser Marking Light
- Fabric Mover **4**

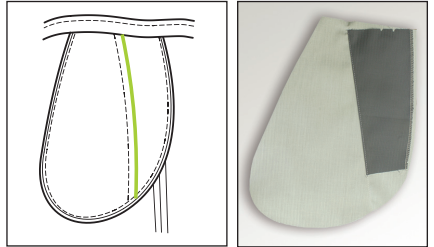
Optional Accessories

- Extra Laser Light for Marking Labels
- Special Folding Station for up to 400 mm Length
- Vacuum Motor
- Label Feeder



Technical Specifications

| | |
|---------------------|--------------------------------|
| Sewing Head | Brother 7200 Lockstitch |
| Sewing Speed | max 4,800 spm |
| Maximum Seam Length | up to 420 mm |
| Folding Length | up to 300 mm (400 mm Optional) |
| Stitch Length | 0,5 - 6 mm |
| Memory | 40 |



Production Data 5,000 - 5,800 pieces per 8 hours



Distributor

AMF REECE
Better Ideas, Better Made

World

Headquarters AMF Reece Inc., Czech Republic
Tovární 837

796 25 Prostějov

Phone: +420 582 309 275

Fax: +420 582 360 608

E-mail: marketing@amfreece.com

Website: www.amfreece.com